



# PERFTECHPRO™

EFFECTIVE, AFFORDABLE TOOLS  
FOR IT CAPACITY MANAGEMENT

zEnterprise

## PRODUCT BROCHURE

### **FAST, EASY, AFFORDABLE** CAPACITY AND PERFORMANCE MANAGEMENT

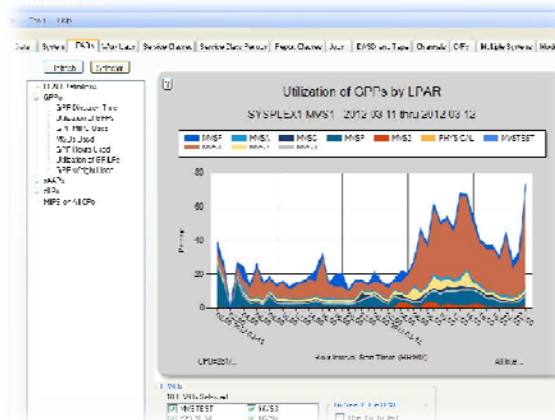
Everything you need to  
**minimize costs** and  
**maximize performance**  
of your enterprise servers

Quickly troubleshoot and  
resolve performance issues

Automated data management

Supports zIIP and zAAP  
Specialty Engines

Forecasting and Modeling



## PERFTECHPRO™ FOR z/OS

Next ►

## EASY TO USE

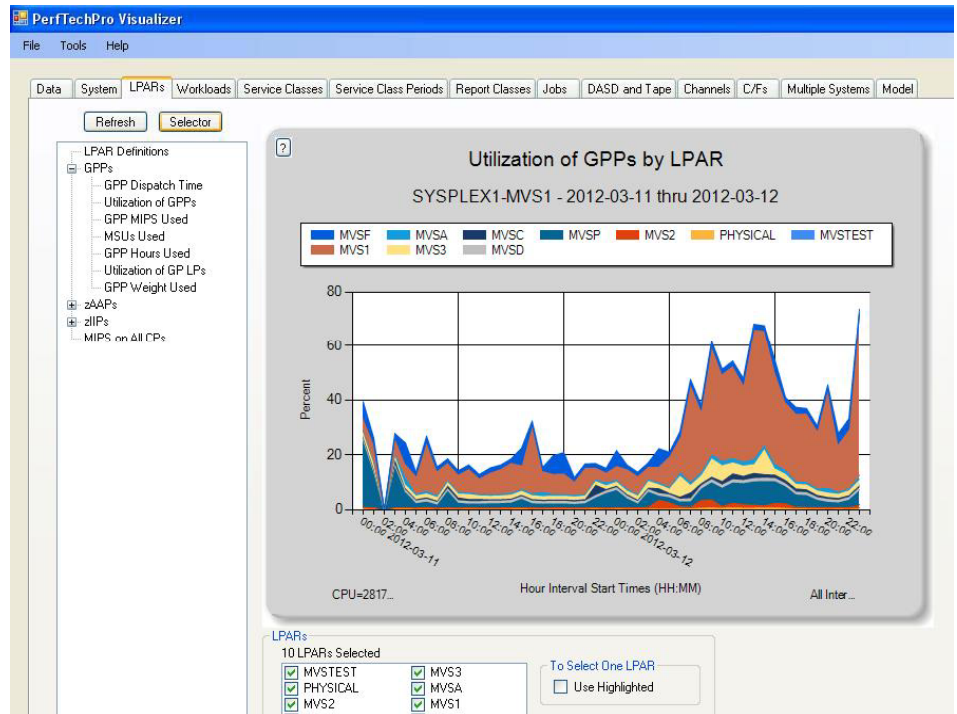
### CLEAN, INTUITIVE INTERFACE

Quickly see and understand how your systems are performing according to key capacity & performance metrics including:

- › General Purpose Processor utilization by all LPARs
- › MIPS usage by CPU
- › DASD Response Times
- › Address Spaces Dispatched and Waiting

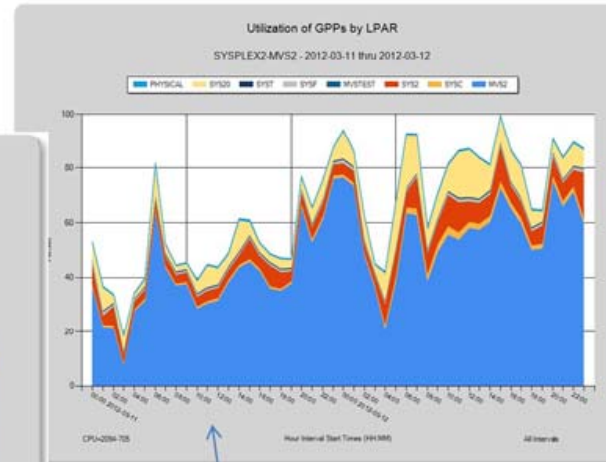
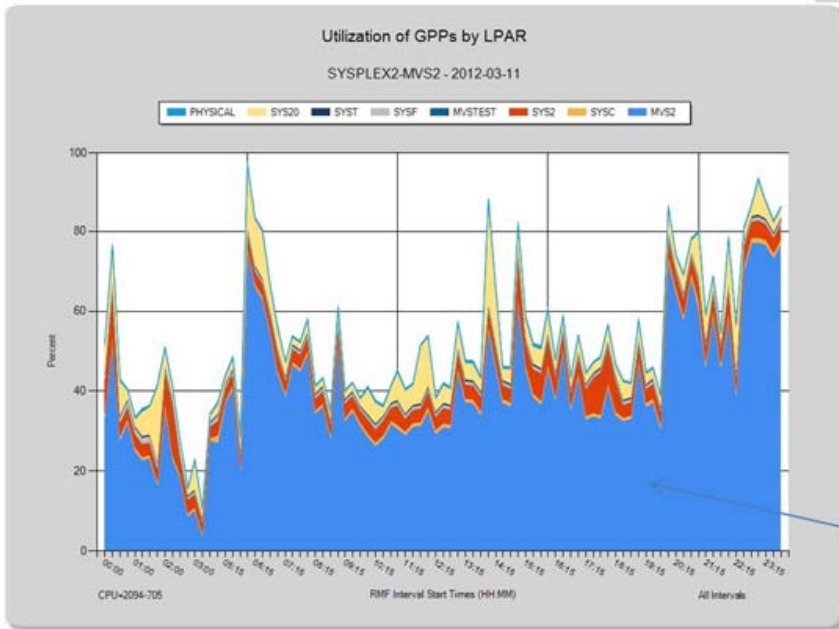
Designed to speed management tasks

- › Descriptive dialog boxes detail your system's specific configuration
- › Anticipates and pre-loads data to speed retrieval, reporting and analysis
- › Consolidated instance lists guide users to make informed selections





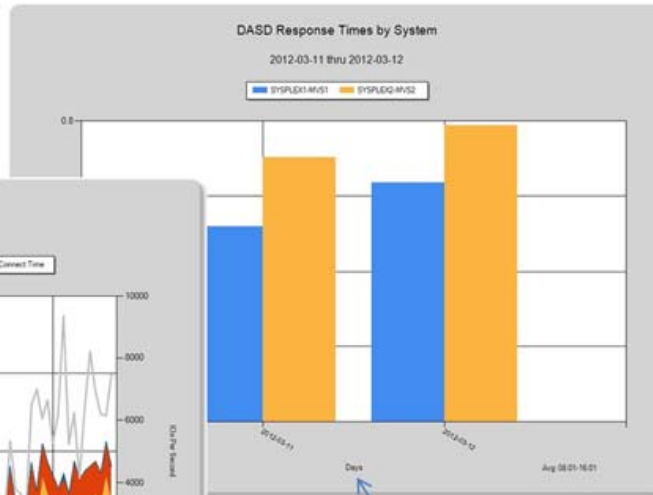
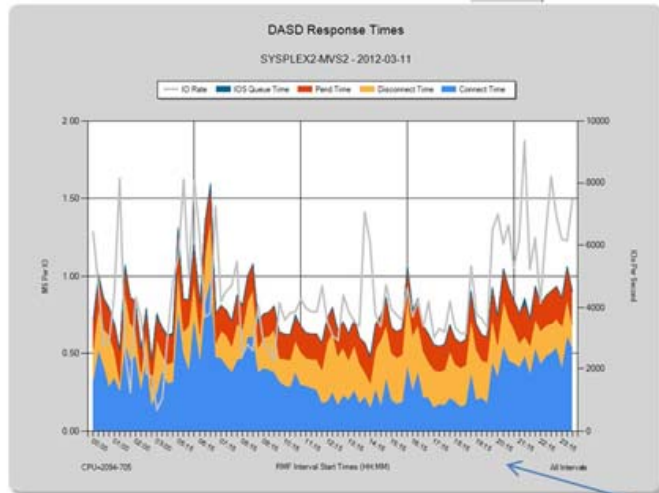
# PERFTECHPRO



Change intervals  
among RMF, 15, 30  
and 60 minutes



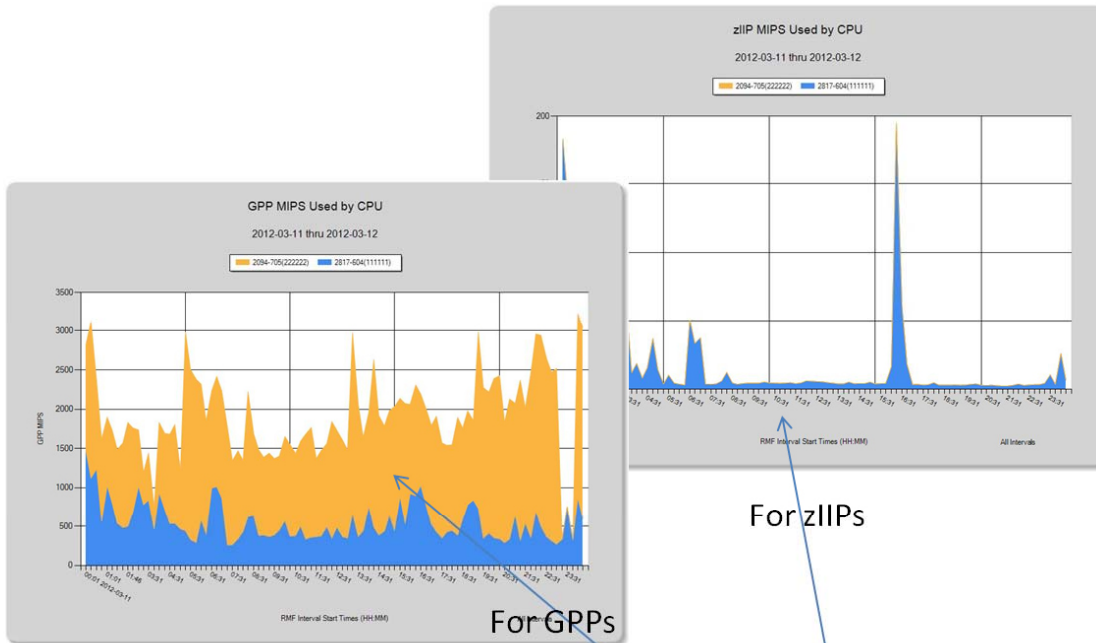
# PERFTECHPRO



Show metrics over all intervals in one day or compare days



# PERFTECHPRO



For GPPs

For zIIPs

MIPS usage on the two CPUs at this site

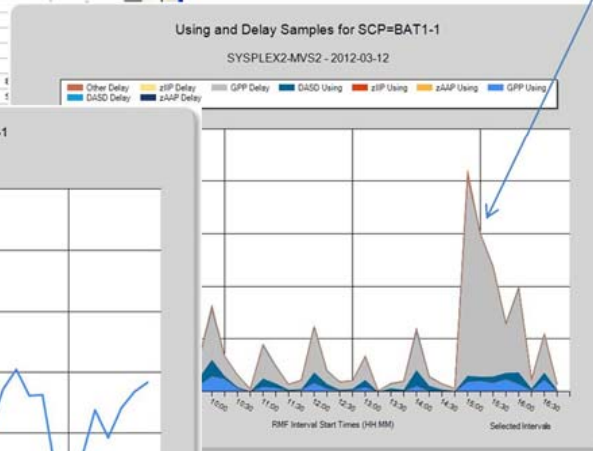
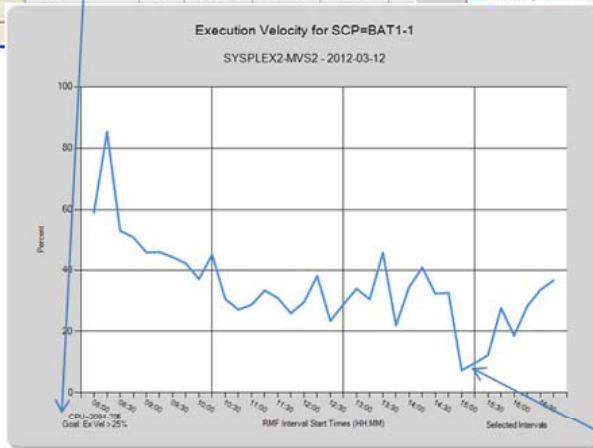


# PERFTECHPRO

## Goal Definitions for BAT1 Period 1

Service Class	Period	Goal Type	Goal Units	Goal Value	Percentile Value	Importance
SYSDOTHER	1	SYSTEM				0
STC9	1	EV-VEL		65		1
BAT5	1	EV-VEL		10		3
BAT1	1	EV-VEL		25		2
BAT2	1	EV-VEL		40		
STC12	1	EV-VEL		85		
BAT4	1	EV-VEL		60		
BAT6	1	EV-VEL		20		
BAT7	1	EV-VEL		5		
DDF1	1	PCTRT	MSEC	500		
DDF2	1	PCTRT	MSEC	1000		

The reason is delay at the GPP resource



# PERFTECHPRO

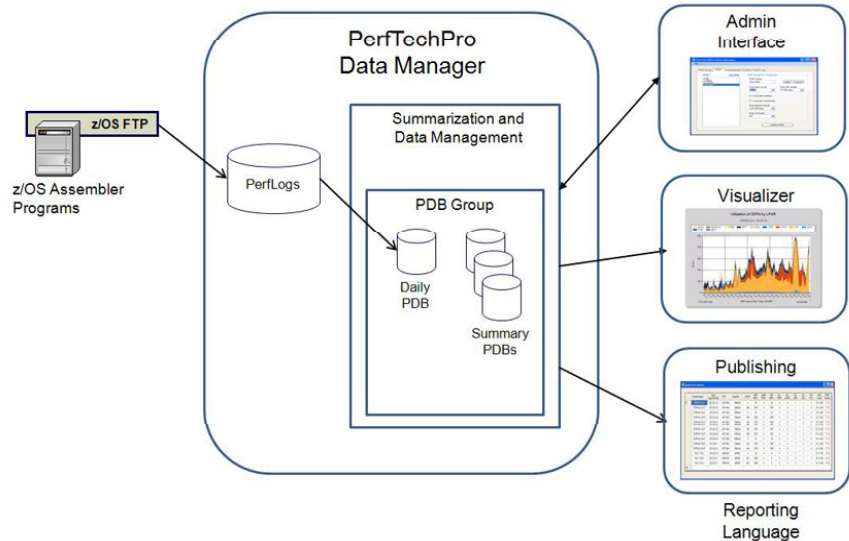
## **FAST AND AFFORDABLE** DESIGNED FOR 21<sup>ST</sup> CENTURY DATA CENTERS

PerfTechPro for z/OS recognizes IT professionals' need for reliable, flexible and affordable capacity and performance management tools.

- › Costs a fraction of competitors' solutions
- › Stores data in non-proprietary database, enabling use outside of PerfTechPro

Clear, value-based pricing and simple licensing terms save you time and money.

## Architecture



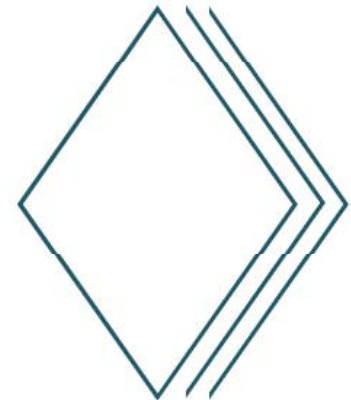


## ABOUT THE PRODUCT

### *PERFTECHPRO FOR z/OS*

#### **Business Value**

- › Ensure enterprise server resources are being used efficiently
- › Maximize opportunities for cost-savings
- › Anticipate and respond to increased demand on resources
- › Reduce costs by exploiting periods of lower resource demand
- › Discern underlying causes of performance and capacity issues
- › Eliminate time-consuming manual tracking, recording and analysis
- › Implement deliberate, disciplined approach to managing valuable business resources







CONTACT US

LEARN MORE ...

ON-LINE: [WWW.PERFTECHPRO.COM](http://WWW.PERFTECHPRO.COM)  
[WWW.LINKEDIN.COM/PERFTECHPRO](http://WWW.LINKEDIN.COM/PERFTECHPRO)

EMAIL: [INFO@PERFTECHPRO.COM](mailto:INFO@PERFTECHPRO.COM)

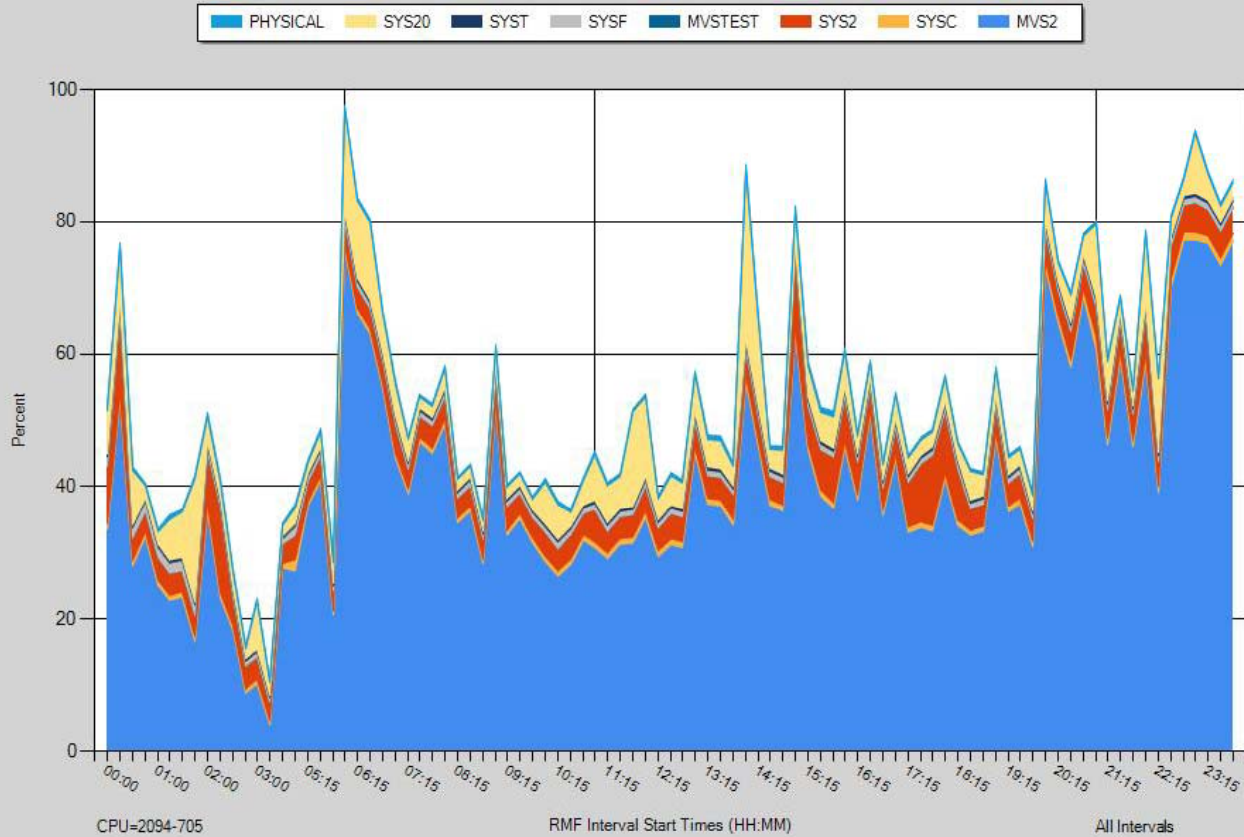
BY PHONE: TOLL-FREE 1-855-PERFTECHPRO  
(737-3832)



Back | Next ►

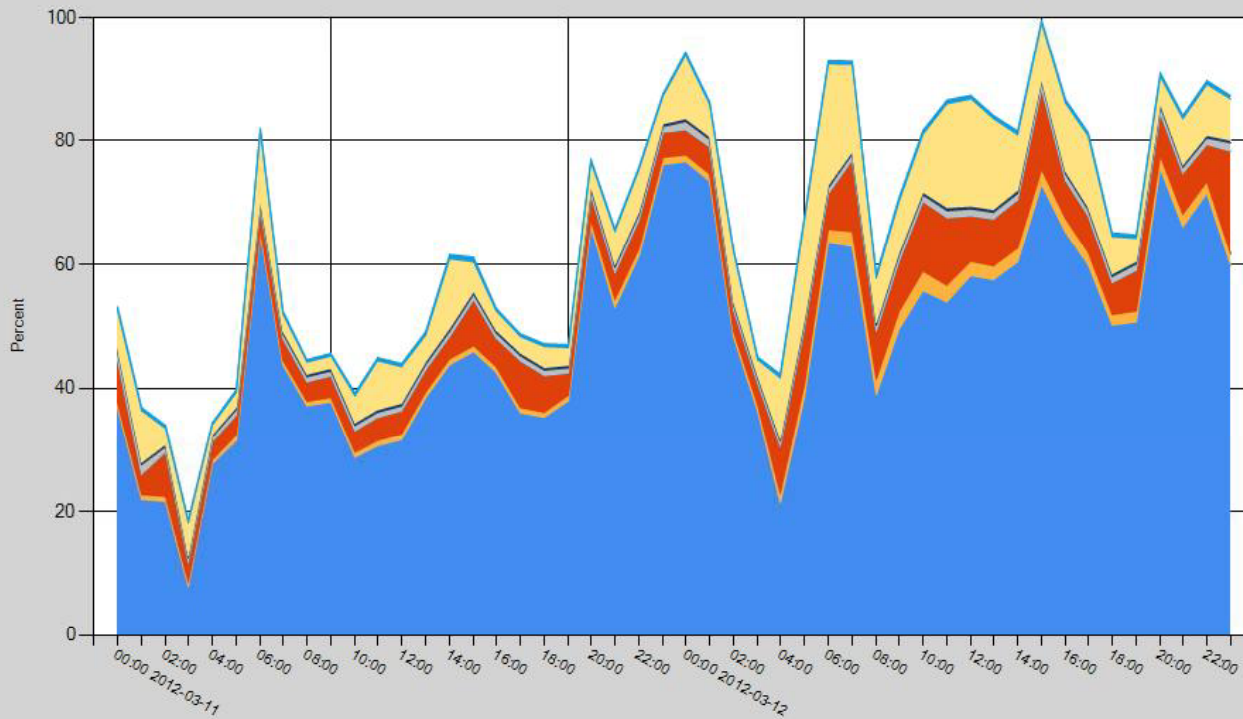
# Utilization of GPPs by LPAR

SYSPLEX2-MVS2 - 2012-03-11



# Utilization of GPPs by LPAR

SYSPLEX2-MVS2 - 2012-03-11 thru 2012-03-12



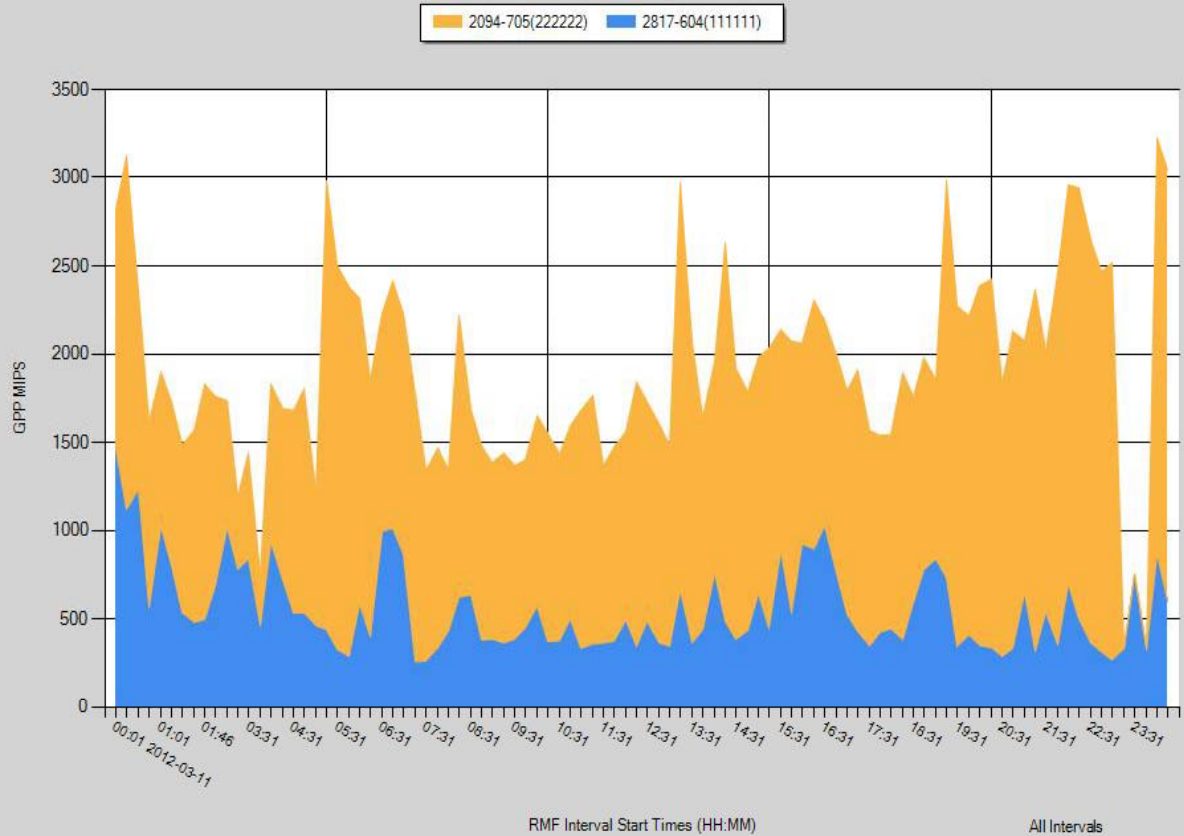
CPU=2094-705

Hour Interval Start Times (HH:MM)

All Intervals

# GPP MIPS Used by CPU

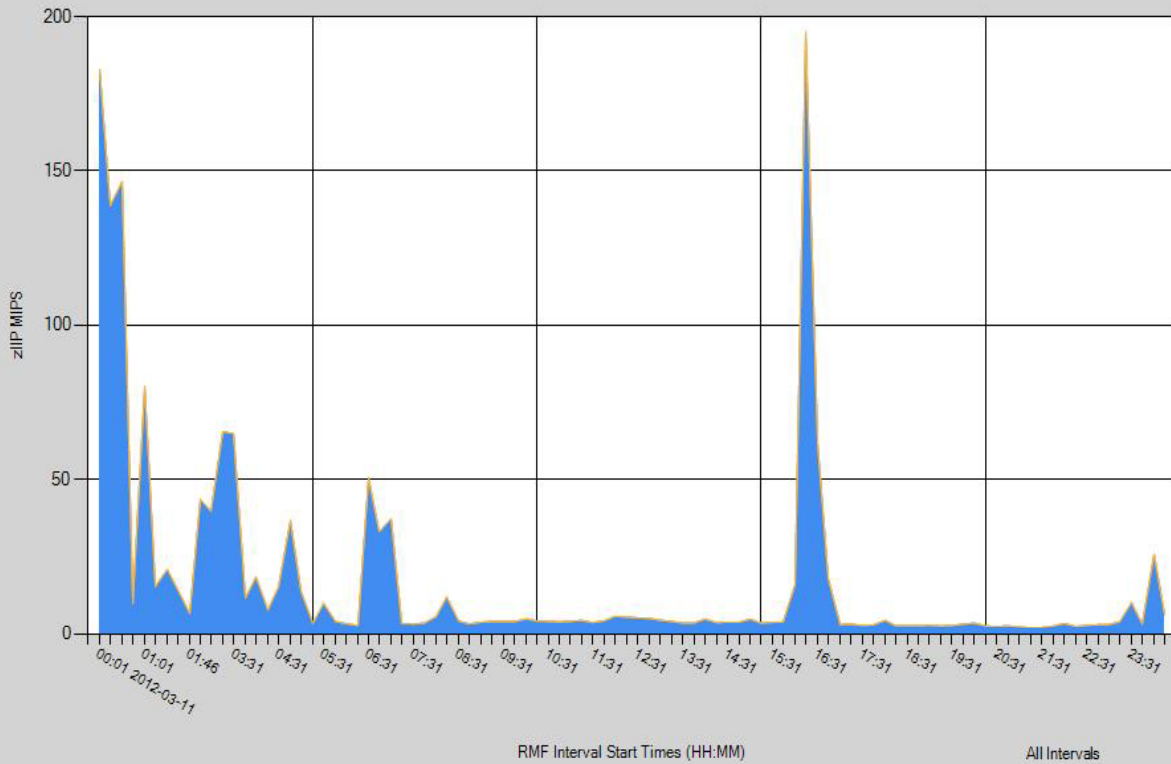
2012-03-11 thru 2012-03-12



# zIIP MIPS Used by CPU

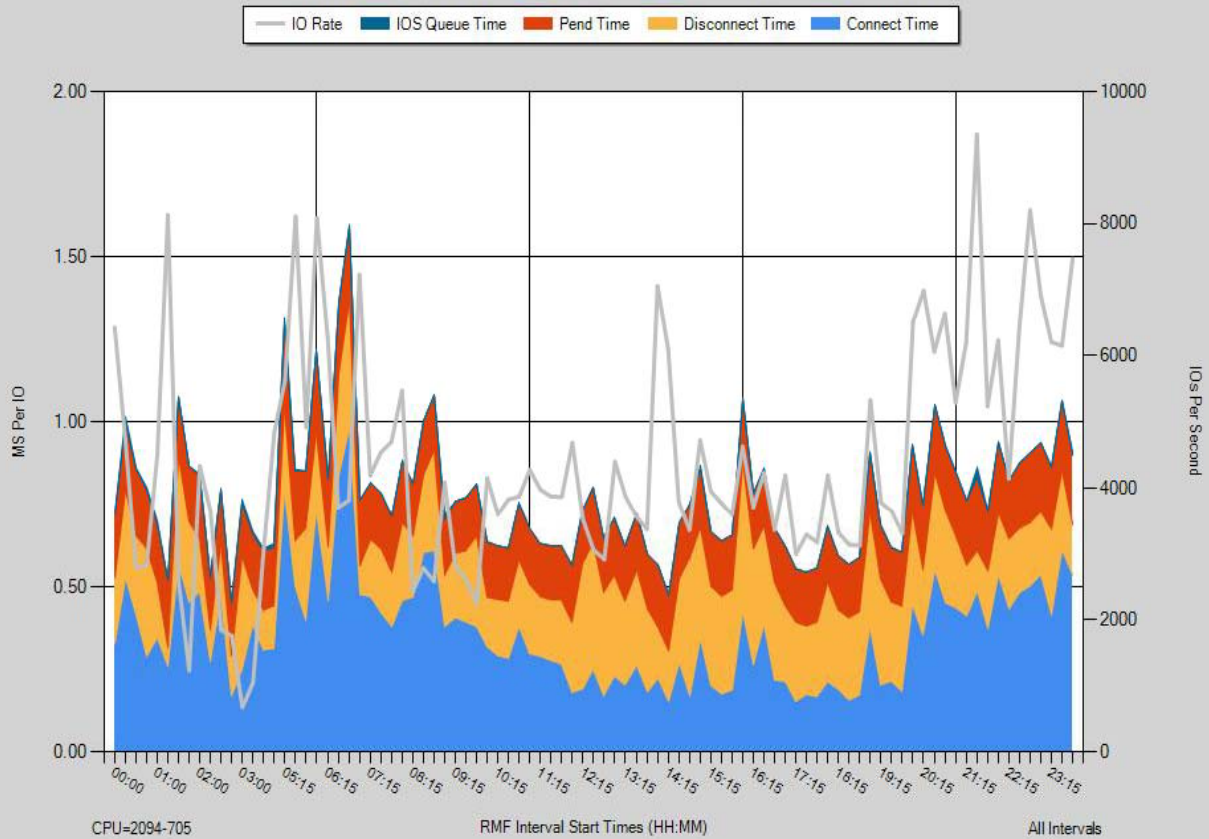
2012-03-11 thru 2012-03-12

2094-705(222222) 2817-604(1111111)



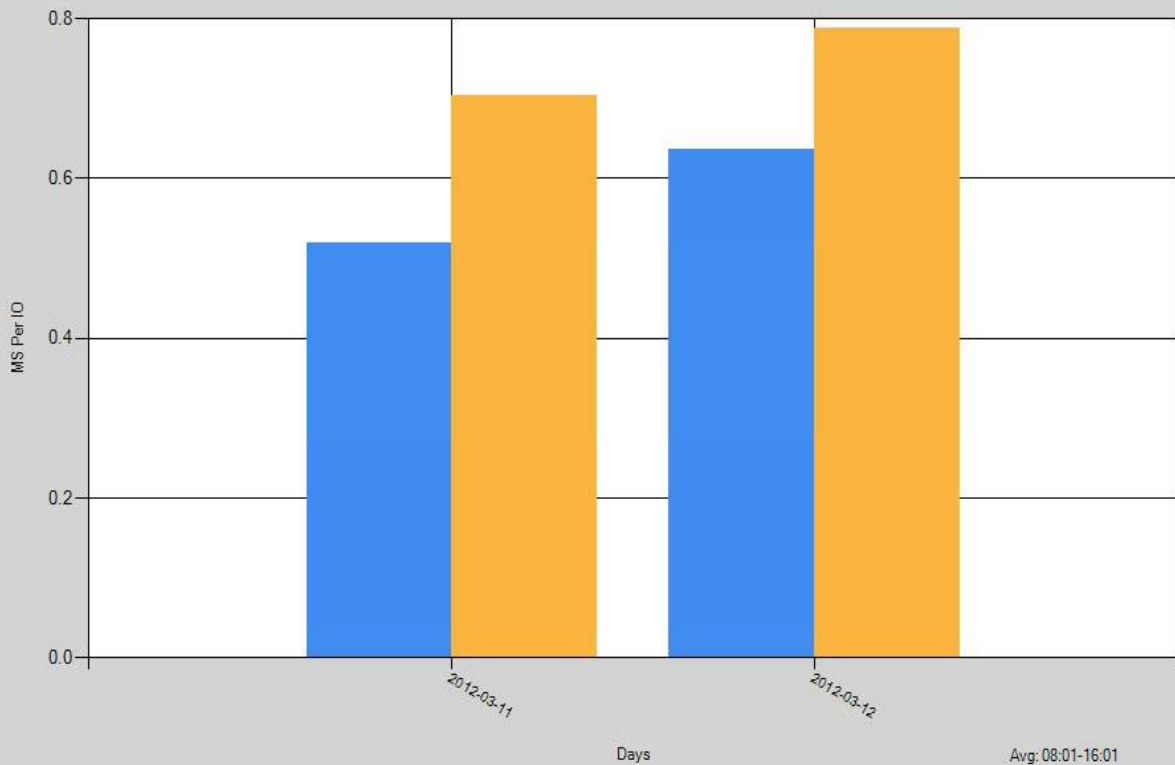
# DASD Response Times

SYSPLEX2-MVS2 - 2012-03-11



### DASD Response Times by System

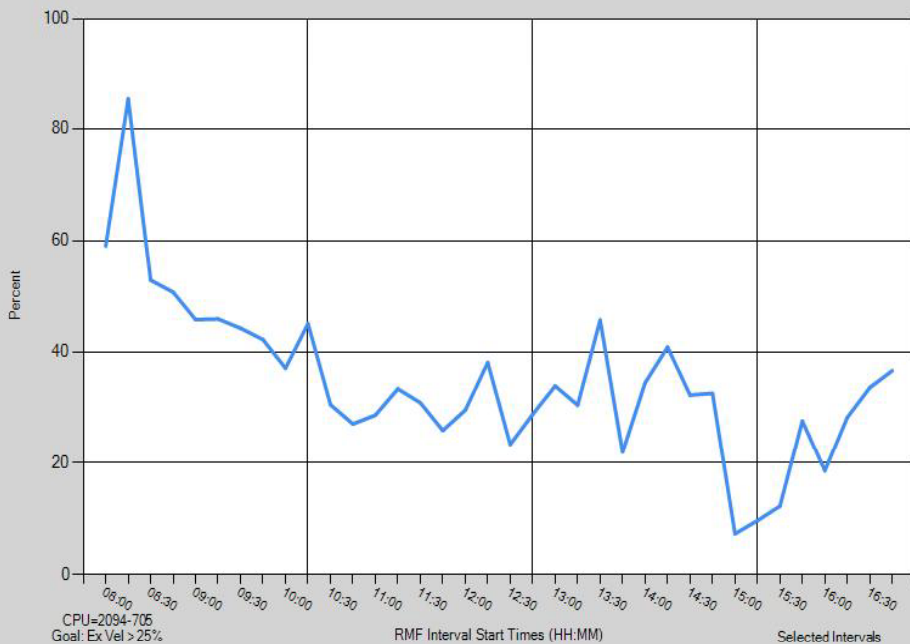
2012-03-11 thru 2012-03-12



Service Class	Period	Goal Type	Goal Units	Goal Value	Percentile Value	Importance
SYSOTHER	1	SYSTEM				0
STC9	1	EXVEL		65		1
BAT5	1	EXVEL		10		3
BAT1	1	EXVEL		25		2
BAT2	1	EXVEL		40		2
STC12	1	EXVEL		85		1
BAT4	1	EXVEL		60		2

### Execution Velocity for SCP=BAT1-1

SYSPLEX2-MVS2 - 2012-03-12





Service Class	Period	Goal Type	Goal Units	Goal Value	Percentile Value	Importance
SYSOTHER	1	SYSTEM				0
STC9	1	EXVEL		65		1
BAT5	1	EXVEL		10		3
BAT1	1	EXVEL		25		2
BAT2	1	EXVEL		40		2
STC12	1	EXVEL		85		1
BAT4	1	EXVEL		60		2
BAT6	1	EXVEL		20		4

### Using and Delay Samples for SCP=BAT1-1

SYSPLEX2-MVS2 - 2012-03-12

